



CITY OF DERBY ACADEMY

# NEWSLETTER

*bringing news to our community*

Issue 9 – Summer 2020

## A Year We Will Never Forget - But So Much To Be Proud Of

Dear Parents, Staff and Students,

Although life, and the world of education, took a significant change in March 2020, I have never been prouder to be Headteacher at the City of Derby Academy. The school vision of improving life chances for all is at the heart of everything we do and I am delighted that CODA will be open for all students in September 2020. I have been left emotional by the amount of positive messages and well wishes from a wide range of members of the community.

Although there has been a distance to learning the togetherness and care for each other has got stronger every day. This has been evident in the regular communications between staff and students; the volume of students returning in our Year 10, key worker and vulnerable children schools; the development of remote learning and more importantly the positive relationships both face to face or remotely.

I am also impressed by the volume and standard of the work that our students are completing on a daily basis. Teachers are still awarding ClassCharts points and my weekly blog recognises the successes of students both at home and in school. The volume of staff who have emailed me examples of great work has grown each week and I am delighted that the ClassCharts record has been broken four times during Lockdown. Wow!

The newsletter would normally recognise and praise some of the wonderful things that have happened in school this term. However, this newsletter will focus on what school will look like in September, the protocols and expectations and how we can all work together to ensure your child returns to a safe environment.

In addition, the newsletter gives some advice and guidance of how to support your child during the Summer break and how to get ready for September 2020.

This period of time has been unfortunate and I want to reassure parents that I will do everything in my power to ensure your child 'gets ahead' in their learning and achieves the qualifications they need to successfully progress on to their next stages in life.

I would like to thank you all for your ongoing support in these most challenging of times and the time you put into supporting your child's education.

For now, please accept the best wishes from CODA and I hope that you all have a great Summer break. Please take time to have a well-deserved break and I look forward to welcoming you all back to school in September.

**Mr P Smith –  
Proud Headteacher**



## September Opening Plans

The DfE have now released their guidance for the full opening of schools in September. The guidance clearly states that it is the Government's plan that all pupils, in all year groups, will return to school full-time from the beginning of the Autumn Term.

The guidance sets out the actions school leaders should take to minimise the risk of transmission in their school. This is public health advice, endorsed by Public Health England (PHE). The guidance has been prepared with input from school leaders, unions and sector bodies and in consultation with Public Health England (PHE) and the Health and Safety Executive (HSE). Full DfE guidance document:

<https://www.gov.uk/government/publications/actions-for-schools-during-the-coronavirus-outbreak/guidance-for-full-opening-schools>

Essential measures include:

- A requirement that people who are ill stay at home
- Robust hand and respiratory hygiene
- Enhanced cleaning arrangements
- Active engagement with NHS Test and Trace
- Formal consideration of how to reduce contacts and maximise distancing between those in school
- Whenever possible, minimise potential for contamination as far as it is reasonably practicable

How contacts are reduced will depend on the school's circumstances and will (as much as possible) include:

- Grouping children together
- Avoiding contact between groups
- Arranging classrooms with forward facing desks
- Staff maintaining distance from pupils and other staff as much as possible

## CoDA's Plans

In the first instance, students should only attend school if they are well. If your child is ill do NOT send them to school. Details of COVID 19 symptoms and the Test and Trace protocols are later on in this guidance.

### Curriculum

All CODA students will receive their complete time table. This will include all of the option subjects for students in Year 10 and 11.

Whenever students move around the school they will be asked to wash/sanitise their hands. We would ask that students bring their own hand sanitiser. However, if this is not possible, the school will provide it.

### Structure of the Day

The normal school day will start at 08:40 and finish at 14:30. Lessons will remain 1 hour in length. The school time table is below:

Time	Session
08:40 - 09:00	Form Time
09:00 - 10:00	Lesson 1
10:00 - 11:00	Lesson 2
11:00 - 12:30	Lesson 3 and lunch (30 mins)
12:30 - 13:30	Lesson 4
13:30 - 14:30	Lesson 5 – END OF DAY
14:30 - 15:00	Support sessions for identified students

The start dates and times are as follows: -

**Year 7** - Monday 7<sup>th</sup> September 08:40

**Year 8** - Tuesday 8<sup>th</sup> September 09:30

**Year 9** - Tuesday 8<sup>th</sup> September 09:30

**Year 10** - Tuesday 8<sup>th</sup> September 09:30

**Year 11** - Tuesday 8<sup>th</sup> September 09:30

### **Where to Enter the School**

There will NOT be staggered start times but there will be different entrances for students to enter and leave the school site. This will support year groups not coming into contact with each other during the school day.

<b>Year Group</b>	<b>Entry Detail</b>
Year 7	Enter school by the main pedestrian gate
Year 8	Enter school by the second pedestrian gate near the main car access gate
Year 9	Enter school by the delivery gate on Farmhouse Road
Year 10	Enter school by the pedestrian gate on Farmhouse Road
Year 11	Enter school by the main pedestrian gate

### **Drop off and Collection**

Following guidance students are to arrive and leave school and the local area following social distancing guidelines of 1 meter plus. To avoid large groupings students should go straight home. If parents are dropping off and collecting students can you please not congregate at the school gate.

### **School Transport**

We recommend that students either walk or cycle to school. If students have to use public transport the current guidance states that the wearing of face coverings is mandatory.

### **Attendance**

Now that the circumstances have changed, and it is vital for all children to return to school to minimise as far as possible the longer-term impact of the pandemic on children's education, wellbeing and wider development. School attendance will therefore be mandatory again from the beginning of the Autumn term, this means from that point, the usual rules on school attendance will apply, including:

- Parents' duty to ensure that their child attends regularly at school where that child is a registered pupil at school and they are of compulsory school age
- Schools' responsibilities to record attendance and follow-up absence
- The availability to issue sanctions, including fixed penalty notices in line with the local authorities' codes of conduct

### **Equipment**

Students will not be able to share personal belongings or equipment. Therefore, it is crucial that students bring to school with them every day their basic equipment, please see the list below: Pen, pencil, ruler, rubber, scissors, glue stick, calculator, coloured pencils, maths set in a suitable pencil case. At CODA we will also provide your child with an individual 'learning pack'. This pack will remain in school and contains all of the additional classroom tools your child will need. i.e. mini-white board.

## Uniform and PE Kit

Students are to wear the full school uniform. In relation to the PE Kit, students are requested to wear CODA PE kit, on the day that they have a PE lesson as they will not be able to use the changing areas.

## Reading book

We also ask students to bring a reading book with them to be used every day.

## BFL

The whole school behaviour for learning policy has been amended to reflect the current situation and it is crucial that we have the support of parents to ensure the safety of the whole school community. The policy highlights behaviours that should be avoided as they may increase the risk of COVID-19 transmission:

- Physical contact with someone who is not part of your household (this can include but is not limited to touching, biting, hitting, punching, hugging etc)
- Spitting
- Sharing equipment/containers e.g. water bottles
- Sharing food items
- Deliberate coughing
- Any other act that would be deemed to be deliberate and harmful towards another person or person(s) in relation to the spread of COVID-19

We would ask that you discuss in particular the behaviours above with your child and the importance of appropriate conduct in school.

## PPE (Personal Protection Equipment)

The use of PPE **in schools** is not recommended. However, if members of the community would like to wear a face covering we will allow that as long as the parents has had a phone conversation with their Head of Year. PPE will be used by staff to administer first aid and the administering of intimate care.

## Catering facilities

Each year group will be allocated canteen use in their 30 minute lunch period and there will be a full provision. We would ask particularly in the first instance, that students bring their own snacks and lunch where possible.







CITY OF DERBY  
ACADEMY

## **YEAR 11 EXAM RESULTS DAY**

Year 11 Results Day will take place on Thursday August 20th from 9am to 12noon.

It will be a socially distanced event to ensure student safety.  
This will mean that times will be staggered.

There will also be an opportunity to speak to a careers adviser and  
Post-16 providers about courses if students would like to.

Results will also be available online on Go4Schools from 08:00 and  
will be posted to students who are unable to come into school.

We will be writing to parents of Year 11 students to inform them of the details  
for the day and the plans will also be released on the website and ClassCharts.

If you have any questions, please call the school.



# Go4Schools

You normally receive three printed reports every year. We can't print reports off at the moment, but this letter explains how you can log in to Go4Schools and access your Easter report online.

## What is Go4Schools?

Go4Schools allows students and parents/guardians to access 'live' information at any time:

- Attendance (daily)
- Behaviour (daily)
- Timetable (daily)
- Target Grades and Predicted Grades in all subjects (updated three times a year)

## How can I access Go4Schools?

All students have a school email address that looks something like this: **username@cityofderbyacademy.org**

Your *username* is the one you use to log into computers in school! If you can remember your username you can now log in to Go4Schools to access your report.

1) To log in, please go to **www.go4schools.com** and click on the Students icon at the top of the main page



2) You will then be taken to the log-in screen. On this screen, please click **First-time User?**

### Welcome!

#### This is the GO 4 Schools login page for Students

In order to login, you will need to use the email address that your school holds for you.

If you don't have a password yet, or have forgotten your password, you can request a password reset email using the **First-time User?** and **Forgotten your Password?** links.

**If you are having problems logging on, please contact your school.**

Email address:	<input type="text"/>
Password:	<input type="password"/>
<input type="checkbox"/> Remember my email address	
<input type="button" value="Sign in"/>	

**First-time User?**

Forgotten your Password?

3) Enter your school email address and click **New password**

#### First-time User?

If you haven't logged on to GO 4 Students before, type your email address and click the "new password" button.

Email address:

Please note, if you are having problems with your password please contact your school. For Data Protection reasons we are unable to divulge or set passwords for students ourselves.

4) Go4Schools will email a password reset link to your school email address. Click on the link to set the new password.

5) You should now be able to log in with your email address and new password and access your report.

Alternatively, you can use the GO4Schools mobile app to make it even easier for you to see your daily timetable and attendance and your termly progress. The GO4Schools Student App is free for students to download from the Apple and Android App stores.



The app uses the same login details (email address and password) as the GO4Schools web site.

#### PLEASE NOTE – PARENTAL ACCESS

A letter has already been sent out to all parents explaining how they can set up access Go4Schools to see your reports. They **cannot** access Go4Schools if the school does not have their email address on our database.

If they have not yet provided us with an email address, or their email address has changed, please ask them to follow the steps below:

1) Send an email to the following address: **Parents@cityofderbyacademy.org**

2) In your email, simply provide us with the following information:

- Child's name
- Child's date of birth
- Year group
- Form group (if known)
- Your name
- Your relationship to the child

We will then be able to add/update their email address and link it to the student information on our database.

Once we have your parents' email address in our system they can set up access and use the parents section of the Go4Schools website or download the GO4Schools mobile app.

If you (or your parents) have any questions about Go4Schools, please email me at [aharding@cityofderbyacademy.org](mailto:aharding@cityofderbyacademy.org)

Please stay home and stay safe at this current time!

A handwritten signature in black ink, appearing to read 'A. Harding'.

Mr. A. Harding (Deputy Headteacher)



SUBJECT	Websites recommended by teachers at CODA
Art (AQA)	<a href="http://www.aqa.org.uk/subjects/art-and-design/gcse/art-and-design-8201-8206">www.aqa.org.uk/subjects/art-and-design/gcse/art-and-design-8201-8206</a>
Business (Edexcel)	<a href="https://www.bbc.co.uk/bitesize/examspecs/z98snbk">https://www.bbc.co.uk/bitesize/examspecs/z98snbk</a> <a href="http://www.senecalearning.com">www.senecalearning.com</a> <a href="https://businessed.co.uk/index.php/home/theory/gcse/edexcel-gcsetheory">https://businessed.co.uk/index.php/home/theory/gcse/edexcel-gcsetheory</a>
English Literature (AQA)	<a href="http://www.bbc.co.uk/bitesize">www.bbc.co.uk/bitesize</a> <a href="http://www.sparknotes.com/lit/">www.sparknotes.com/lit/</a>
English Language (AQA)	<a href="http://www.bbc.co.uk/bitesize">www.bbc.co.uk/bitesize</a>
Food Preparation & Nutrition (AQA)	<a href="http://www.illuminate.digital/aqafood">www.illuminate.digital/aqafood</a> USERNAME: SCITYOFDERBY3 PASSWORD: STUDENT3 <a href="http://www.senecalearning.com">www.senecalearning.com</a> Food Preparation and Nutrition: AQA GCSE <a href="http://www.bbc.co.uk/bitesize/subjects/zdn9jhv">www.bbc.co.uk/bitesize/subjects/zdn9jhv</a>
French (AQA)	<a href="http://www.linguascope.com">www.linguascope.com</a> <a href="http://www.memrise.com">www.memrise.com</a> <a href="http://www.languagesonline.org.uk">www.languagesonline.org.uk</a>
Geography (AQA)	<a href="http://www.bbc.co.uk/bitesize">www.bbc.co.uk/bitesize</a> <a href="http://www.senecalearning.com">www.senecalearning.com</a> <a href="http://www.coolgeography.co.uk">www.coolgeography.co.uk</a> <a href="http://www.internetgeography.net/gcse-geography-revision">www.internetgeography.net/gcse-geography-revision</a> <a href="http://www.aqa.org.uk/subjects/geography/gcse/geography-8035">www.aqa.org.uk/subjects/geography/gcse/geography-8035</a>
History (Edexcel)	<a href="http://www.bbc.co.uk/bitesize">www.bbc.co.uk/bitesize</a> <a href="http://www.senecalearning.com">www.senecalearning.com</a>
Mathematics (AQA)	<a href="https://mathswatch.co.uk">https://mathswatch.co.uk</a> <a href="http://www.mymaths.co.uk">www.mymaths.co.uk</a>
Music (OCR)	<a href="https://www.bbc.co.uk/bitesize/examspecs/zv7gxyc">https://www.bbc.co.uk/bitesize/examspecs/zv7gxyc</a> <a href="http://www.youtube.com">www.youtube.com</a> (search for OCR GCSE Music Virtual Textbook)
Resistant Materials (AQA)	<a href="http://www.technologystudent.com/">www.technologystudent.com/</a> <a href="http://www.bbc.co.uk/schools/gcsebitesize/design/resistantmaterials/">www.bbc.co.uk/schools/gcsebitesize/design/resistantmaterials/</a> <a href="http://home.howstuffworks.com/">home.howstuffworks.com/</a> <a href="http://www.ergonomics4schools.com/">www.ergonomics4schools.com/</a> <a href="http://www.design-technology.org/">www.design-technology.org/</a>
<b>Science (AQA)</b>  <b>Triple Science only:</b> <b>Biology (AQA)</b> <b>Chemistry (AQA)</b> <b>Physics (AQA)</b>	<a href="http://www.senecalearning.com">www.senecalearning.com</a> <a href="http://www.youtube.com">www.youtube.com</a> <ul style="list-style-type: none"> <li>• freesciencelessons (AQA 9-1 course)</li> <li>• Primrose Kitten (AQA 9-1 course)</li> <li>• Fuse School</li> <li>• Cognito</li> <li>• Don't memorise</li> </ul> <p>Past Papers:</p> <a href="https://www.aqa.org.uk/subjects/science/gcse">https://www.aqa.org.uk/subjects/science/gcse</a> Combined Science: Trilogy (double science) Triple Science ONLY: Biology, Chemistry, Physics
Sports Science (OCR)	<a href="http://www.ocr.org.uk/qualifications/cambridge-nationals/sport-science-level-1-2-j802-j812/">www.ocr.org.uk/qualifications/cambridge-nationals/sport-science-level-1-2-j802-j812/</a>





## How To Join A Class On Seneca Learning

SenecaLearning.com

**Step 1:** Open an internet browser  
Any browser except Internet Explorer will work

**Step 2:** Go to SenecaLearning.com

**Step 3:** Click on "Get Started" or "Sign Up"

**Step 4:** Create your account  
If you don't know your parent email, then type: N/A

**Step 5:** Click on "Classes & Assignments"  
You'll find this in the top menu

**Step 6:** Click on "Join Class"  
It's the green button in the top right corner

**Step 7:** Type the code from your teacher  
If you received a link instead, then open the link

The science department are using Seneca whilst the schools are shut. Well done to all the students that have signed up so far. If you haven't then please follow the instructions to do so, the class codes can be found below. More detailed instructions have been sent out via class charts.

**IF YOU NEED HELP:** email Mrs Ryan: [tryan@cityofderbyacademy.org](mailto:tryan@cityofderbyacademy.org)

Year / Class	Level	Science Codes
Year 7	Key stage 3	<b>v9m5sfyyt0</b>
Year 8	Key stage 3	<b>uw1zbhdqx7</b>
9A1, 9B1 (& higher level set 2 students)	GCSE Higher	<b>prd6mrasic</b>
Year 9 - Sets 2, 3, 4	GCSE Foundation	<b>cgxf0x2hll</b>
10.1 & 10.2	GCSE Higher	<b>j8bxno20yp</b>
10.3, 10.4, 10.5, 10.6, 10.7, 10.8	GCSE Foundation	<b>1yizvbqddu</b>
11.1	GCSE Triple	<b>p7bjvy5yaf</b>
11.1	GCSE Higher	<b>1n19x8xct5</b>
11.2, 11.3, 11.4, 11.5, 11.6, 11.7, 11.8	GCSE Foundation	<b>muekl2kir1</b>

Activities For All Ages	
<b>PE with Joe Wicks -</b> <b>YOUTUBE.COM/THEBODYCOACH</b>	Fitness guru The Body Coach leads livestreams on his YouTube channel with workouts created specifically for kids. Kick off your day with some exercise and keep your energy levels up!
<b>Geography &amp; Environmental Studies with Steve Backshall</b>	Bring the wild into your living room with naturalist and TV presenter Steve Backshall! Answering all of your burning questions about animals, conservation and the environment with his live Q&A broadcasts across Facebook and YouTube.
<b>Maths with Carol Vorderman -</b> <b>THEMATHSFACTOR.COM</b>	Legendary Countdown alumnus and mathematician Carol Vorderman has opened up her incredible maths website The Maths Factor to the public, giving access to 4-12 year olds until they go back to school.
<b>Science with Maddie Moate and Greg Foot -</b> <b>YOUTUBE.COM/MADDIEMOATE</b>	Join Maddie Moate from CBeebies' Do You Know every day for a science lesson with a twist, all from the comfort of your own home! Let's Go Live features quirky garden activities, craft ideas and plenty of fun facts to keep little brains busy.
<b>Dance with Oti Mabuse -</b> <b>YOUTUBE.COM/OTIMABUSEOFFICIAL</b>	Oti Mabuse is bringing some Strictly magic to your living room with her free livestreams where she and Marius Lepure will be teaching you how to dance like a pro in just half an hour. Each has a different theme - so far there's been Mary Poppins, Trolls and even Shrek!
<b>English with David Walliams -</b> <b>WORLDOFDAVIDWALLIAMS.COM</b>	Bestselling children's author and brilliant comedian David Walliams releasing audio versions of his stories. When you've got a quiet moment during the day, settle down and listen to his hilarious 20-minute storytelling sessions and escape the world for a bit.
<b>Food Tech with Jamie Oliver -</b> <b>CHANNEL4.COM/KEEPCOOKINGANDCARRYON</b>	Chef Jamie Oliver is releasing episodes of his Keep Cooking and Carry On series on Channel 4, focusing on how to make the most of what you've already got in the kitchen. Plus, Jamie's 9-year-old son Buddy has an entire playlist on YouTube dedicated to kid-friendly cooking that you can join in with.
<b>History with Dan Snow -</b> <b>TV.HISTORYHIT.COM</b>	The History Guy Dan Snow presents his website History Hit, which you can use to help stick to your history curriculum. You'll find documentaries on everything from Roman Britain to Jack the Ripper and in between.
<b>Music with Myleene Klass -</b> <b>YOUTUBE/MYLEENEMUSICKLASS</b>	Myleene's Music Klass, where she posts lessons to get your children's music abilities flowing. You'll learn all the basics about rhythm and reading music and who knows, you may even end up with some mini Mozarts!
<b>Story Time with Amy Adams, Chris Pratt and more</b>	Loads of huge Hollywood stars have joined forces to bring you Save With Stories - an Instagram account where celebrities read their favourite children's stories and sing their favourite songs to keep kids entertained.
<b>Home Economics with Theo Michaels -</b> <b>https://www.theocooks.com/kids-cookalong-live/</b>	Join Masterchef semi-finalist and TV chef Theo in a family-friendly cook-along as you create something delicious from your cupboards. There are weblinks to all the live shows he has posted.

Source [www.kidadl.com](http://www.kidadl.com)


## KEY CONTACTS



**Derby Social Care**  
**01332 641 172**  
 (Out of hours 01332 786 968)








### BME FAMILIES AND NEW COMMUNITIES

<b>Derby Bosnia-Herzegovina Community Association and Derby Refugee Forum</b> 	Services to former Yugoslavia. Advice & information to Bosnian/ Serb/ Croat language. Food parcels, clothing, help to small new community ethnic groups.	<a href="http://www.bihcommunityderby.co.uk/">www.bihcommunityderby.co.uk/</a> <a href="mailto:bihcommderby@hotmail.com">bihcommderby@hotmail.com</a> 01332 347497 99 Curzon St, Derby DE1 1LN
<b>British Red Cross</b> 	Supports refugees and asylum seekers to access services to adapt to new country.	<a href="http://www.redcross.org.uk">www.redcross.org.uk</a> 01332 525423
<b>Roma Community Care</b> 	Grassroots community organisation for Eastern and Central European Roma people living in Derby.	<a href="http://www.multifaithcentre.org/projects/roma-community-care/">www.multifaithcentre.org/projects/roma-community-care/</a> 01332 289818
<b>Hamaari</b> 	Support and advice for disadvantaged and socially isolated people from East Africa in Derby.	<a href="http://www.hamaari.org.uk/">www.hamaari.org.uk/</a> 01332 342564 <a href="mailto:info@hamaari.org.uk">info@hamaari.org.uk</a> 284 Normanton Rd, Derby DE23 6WD
<b>Upbeat Communities</b> 	A Christian charity that welcomes refugees and gives support.	<a href="http://www.upbeatcommunities.org">www.upbeatcommunities.org</a> 01332 360737 96 Whitaker Rd, Derby DE23 6AP
<b>New Arrivals Team</b>	Families and children who have lived in Derby for less than 12 months and need some support.	01332 640733 or 07812300516 <a href="mailto:newarrivalsteam@derby.gov.uk">newarrivalsteam@derby.gov.uk</a>
<b>Eastern European Network (EEN) Centre</b>	Supports Eastern European's about crime.	01332 408228 <a href="mailto:Center.een@gmail.com">Center.een@gmail.com</a>

### DEAF AND DISABLED CHILDREN

<b>Umbrella</b> 	Supports young people 5-30 years and families with disabilities.	<a href="http://www.umbrella.uk.net">www.umbrella.uk.net</a> 01332 785658 <a href="mailto:admin@umbrella.uk.net">admin@umbrella.uk.net</a>
<b>Funability</b> 	Clubs, activities and trips for disabled children and young people aged 3-18 years.	<a href="http://www.stjamescentrederby.co.uk/fun-ability">www.stjamescentrederby.co.uk/fun-ability</a> 01332 604080, Malcolm St, Derby DE23 8LU <a href="mailto:reception@saintjamescentre.org">reception@saintjamescentre.org</a>
<b>Q-Club</b>	Afterschool club for children with Autism, or additional needs, socially excluded, have disabilities or are young carers or bereaving.	<a href="http://www.derbyquad.co.uk">www.derbyquad.co.uk</a> 01332 285427 <a href="mailto:abbiec@derbyquad.co.uk">abbiec@derbyquad.co.uk</a>

## COUNSELLING SERVICES, INCLUDING BEREAVEMENT

	Free, safe and anonymous online support for young people.	Kooth.com
Breakout	Provide care, planned treatment and advice to people under age of 19 on any aspect of drugs or alcohol misuse.	The space @ Connexions Curzon House 8 Curzon street Derby DE1 1LL 01332 623700 <a href="http://www.derbyshirehealthcare.nhs.uk/breakout/what-we-offer/">www.derbyshirehealthcare.nhs.uk/breakout/what-we-offer/</a>
	Supporting young people affected by alcohol, drugs and gambling.	<a href="http://www.derbysubstanceuseservices.org.uk">www.derbysubstanceuseservices.org.uk</a> 0300 790 0265 <a href="mailto:derby@aquarius.org.uk">derby@aquarius.org.uk</a>
	Support for children and adults after the death of someone close.	<a href="http://www.cruse.org.uk">www.cruse.org.uk</a> 01332 332098 Helpline 0808 808 1677 <a href="mailto:derbyshire@cruse.org.uk">derbyshire@cruse.org.uk</a>
	A free, confidential counselling service, which focuses on unplanned pregnancy, miscarriage or termination.	<a href="http://www.talkitoverderby.com">www.talkitoverderby.com</a> 0786 7470588 18 Curzon St, Derby DE1 1LL <a href="mailto:talkitover@hotmail.co.uk">talkitover@hotmail.co.uk</a>
	Counselling to 5 – 18 year olds to support to make sense of what is happening in their lives. (RELATE)	<a href="http://www.safespeak.org.uk">www.safespeak.org.uk</a> 0800 093 5264 or 01332 349301 <a href="mailto:info@safespeak.org.uk">info@safespeak.org.uk</a>
	Offer support to anyone who is Lesbian, Gay, Bisexual & Transgender or issues with identity.	<a href="http://www.derbyshirelgbt.org.uk">www.derbyshirelgbt.org.uk</a> 01332 207704 <a href="mailto:INFO@DERBYSHIRELGBT.ORG.UK">INFO@DERBYSHIRELGBT.ORG.UK</a>

## ADDITIONAL SUPPORT

School nurse	Advice around sexual health, healthy eating, self-harm, emotional health, drugs alcohol and smoking.	TEXT 0750 0078 330 0800 040 ext 88537
Safeguarding	City of Derby Academy	Mrs Bancroft 0771 076 0765 Mrs Grewal 0771 2407863
Wendy Roe Chaplain	Listening service – grief, anxiety, overwhelmed by life.	<a href="mailto:Wendy.roe1@hotmail.co.uk">Wendy.roe1@hotmail.co.uk</a>
Camhs Rise	Self-harm	0300 123 3124

Students can still access school health, text the number **0750 007 8330**

Make sure that your children are safe when working on line

<https://youtu.be/BhLWwQ4Ay5s>

Childlines new coronavirus webpage

<https://www.childline.org.uk/info-advice/your-feelings/anxiety-stress-panic/worries-about-the-world/coronavirus/>

The association for Child Mental Health podcast for parents to be aware of their child's mental health

<https://www.acamh.org/podcasts/dr-jon-goldin-on-the-coronavirus-and-child-mental-health/>

## Specific guidance on students feeling unwell with coronavirus (COVID-19) symptoms

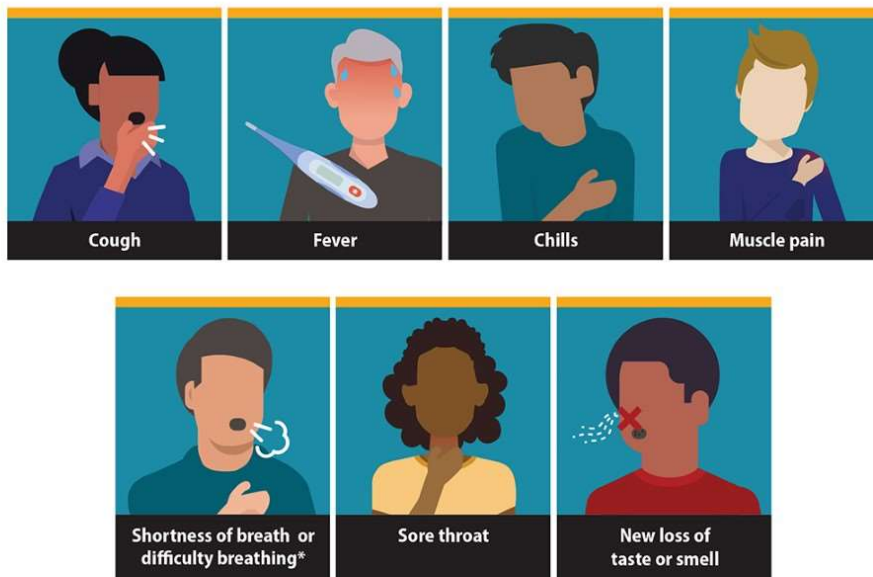
Students and other adults **must not** come into school if they have coronavirus (COVID-19) symptoms:

- New, continuous cough
- High temperature
- Has a loss of, or a change in their normal sense of taste or smell (anosmia)
- Or have tested positive in the last 7 days

If anyone in the school becomes unwell during the day with any of the above symptoms, they must be sent home and self-isolate for at least 7 days and should arrange to have a test to see if they have coronavirus (COVID-19). Other members of their household (including any siblings) will also need to self-isolate for 14 days from when the symptomatic person first had symptoms.

## Symptoms of Coronavirus (COVID-19)

Know the symptoms of COVID-19, which can include the following:



Symptoms can range from mild to severe illness, and appear 2-14 days after you are exposed to the virus that causes COVID-19.

**\*Seek medical care immediately if someone has emergency warning signs of COVID-19.**

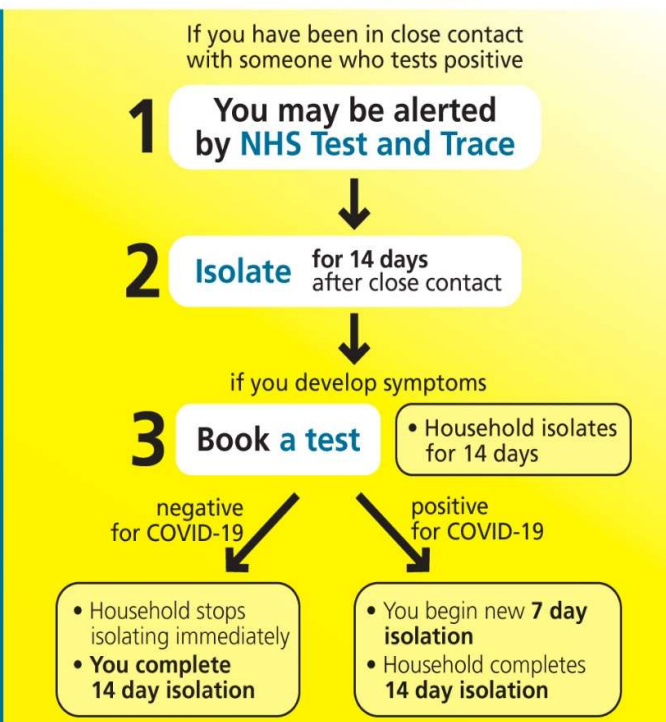
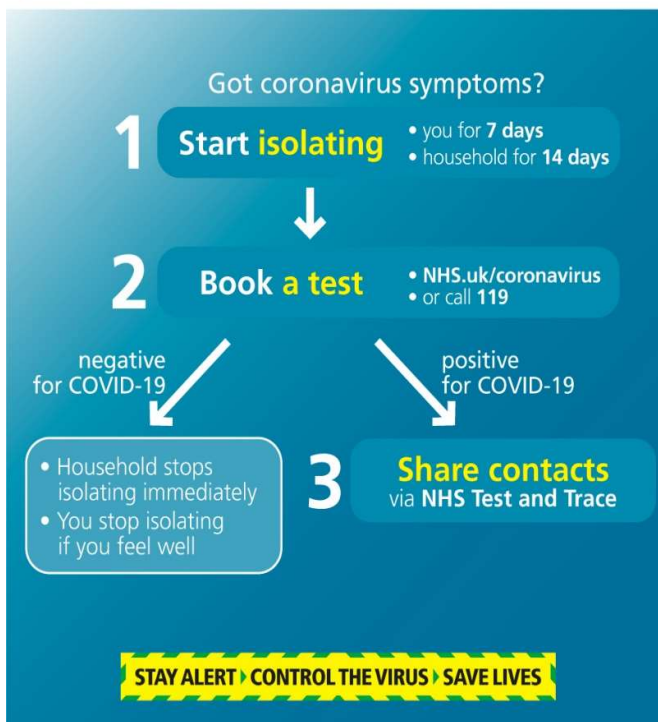
- Trouble breathing
- Persistent pain or pressure in the chest
- New confusion
- Inability to wake or stay awake
- Bluish lips or face

**Call 111 or use the NHS online coronavirus service if you need advice**



## NHS TEST AND TRACE – Parents will be required to:

- Book a test if their child is displaying symptoms. All children can be tested. Tests can be **booked online through the NHS testing and tracing website** or ordered by **telephone via NHS 119**.
- Provide details of anyone their child has been in close contact with if they were to test positive for coronavirus (COVID-19) or if asked by NHS Test and Trace (school will provide information to NHS regarding other children in school)
- Self-isolate if they have been in close contact with someone who develops coronavirus (COVID-19) symptoms or someone who tests positive for coronavirus (COVID-19)
- Inform school immediately if someone **tests negative**, if they feel well and no longer have symptoms similar to coronavirus (COVID-19), they can stop self-isolating.
- They could still have another virus, such as a cold or flu- in which case it is still best to avoid contact with other people until they are better. Other members of their household can stop self-isolating.
- Inform school immediately if someone **tests positive**, they must continue to self-isolate for at least 7 days from the onset of their symptoms and return to school only if they do not have symptoms other than cough or loss of sense of smell/taste. This is because a cough or anosmia can last for several weeks once the infection has gone. The 7 day period starts from the day when they first became ill. If they still have a high temperature, they should keep self-isolating until their temperature returns to normal. Other members of their household should continue self-isolating for the full 14 days.



## KEY DATES

NB: Events taking place during September through to November will be organised as a remote event.

School Term Dates	INSET Dates
3 <sup>rd</sup> September 2020 – 23 <sup>rd</sup> October 2020	Thursday 3 <sup>rd</sup> September 2020 Friday 4 <sup>th</sup> September 2020 Friday 23 <sup>rd</sup> October 2020 Monday 23 <sup>rd</sup> November 2020 Monday 4 <sup>th</sup> January 2021
2 <sup>nd</sup> November 2020 – 18 <sup>th</sup> December 2020	
	<b>Bank Holidays</b>
4 <sup>th</sup> January 2021 – 12 <sup>th</sup> February 2021	Friday 25 <sup>th</sup> December 2020 Monday 28 <sup>th</sup> December 2020 Friday 2 <sup>nd</sup> April 2021 Monday 5 <sup>th</sup> April 2021 Monday 3 <sup>rd</sup> May 2021 Monday 31 <sup>st</sup> May 2021
22 <sup>nd</sup> February 2021 – 2 <sup>nd</sup> April 2021	
19 <sup>th</sup> April 2021 – 28 <sup>th</sup> May 2021	
7 <sup>th</sup> June 2021 – 22 <sup>nd</sup> July 2021	

Parents' Evenings		
Year 11 Aim for Success	Tuesday 15 <sup>th</sup> September 2020	
KS3 & KS4 Information Evening	Tuesday 22 <sup>nd</sup> September 2020	
Year 6 Opening Evening	Wednesday 7 <sup>th</sup> October 2020	5.30 pm – 7.30 pm
Year 7 -11 Tutor Evening	Tuesday 20 <sup>th</sup> October 2020	4.00 pm – 6.00 pm
Normanton Parents' Evening	Wednesday 11 <sup>th</sup> November 2020	3.30 pm – 6.30 pm
Year 11 Parents' Evening	Wednesday 13 <sup>th</sup> January 2021	3.30 pm – 6.30 pm
Year 9 Options Evening	Wednesday 27 <sup>th</sup> January 2021	5.30 pm – 7.30 pm
Year 9 Parents' Evening	Wednesday 10 <sup>th</sup> February 2021	3.30 pm – 6.30 pm
Year 8 Parents' Evening	Thursday 11 <sup>th</sup> March 2021	3.30 pm – 6.30 pm
Normanton Parents' Evening	Thursday 25 <sup>th</sup> March 2021	3.30 pm – 6.30 pm
Year 10 Parents' Evening	Wednesday 26 <sup>th</sup> May 2021	3.30 pm – 6.30 pm
Year 7 Parents' Evening	Tuesday 22 <sup>nd</sup> June 2021	3.30 pm – 6.30 pm
Normanton Parents' Evening	Wednesday 30 <sup>th</sup> June 2021	3.30 pm – 6.30 pm

Exams	
Year 11 Subject Diagnostic Tests	Monday 7 <sup>th</sup> September 2020 (all week)
Year 11 Subject Diagnostic Tests	Monday 14 <sup>th</sup> September 2020 (all week)
Year 11 mock exams/PPE	Monday 9 <sup>th</sup> November 2020 (all week)
Year 11 mock exams/PPE	Monday 16 <sup>th</sup> November 2020 (all week)
Year 11 mock exams/PPE	Monday 22 <sup>nd</sup> February 2021 (all week)
Year 11 mock exams/PPE	Monday 1 <sup>st</sup> March 2021 (all week)
Year 10 mock exams/PPE	Monday 21 <sup>st</sup> June 2021 (all week)
Year 10 mock exams/PPE	Monday 28 <sup>th</sup> June 2021 (all week)

## Payments

In line with government advice and the COVID-19 pandemic, from September we will no longer be accepting cash payments for trips, revision guides etc. We will only be taking payment via our secure online payment system Parentpay. Parentpay can be accessed via the parent tab on the Academy website. An activation letter will be posted out this week with your unique activation details. If you have any queries please contact the Academy.

## Mr Smith's Weekly Blog

Each week Mr Smith uploads a weekly blog to our website, Facebook and Twitter pages. The blogs are a great way to showcase/ recognise students. To read Mr Smith's blogs please visit our website: <http://www.cityofderbyacademy.org/headteachers-blog/>

## Two Week Timetable Schedule

The City of Derby Academy deliver lessons using a two week timetable. The schedule can be accessed on our website at: <http://www.cityofderbyacademy.org/school-day-timings/>

We regularly upload information to parents/guardians via our website, Facebook and Twitter account, please ensure you follow us to be kept up to date.

## Student Lockers

Student lockers are available in school for a small annual rental fee from Independent Locker Solutions Ltd. For more information please visit: <https://ilsschools.co.uk/>

## Uniform Pop-up Shops

Uniform can be purchased from our supplier - Schools in Uniform (formerly Trutex) - at our in school pop-up shops. These are held in school once a month in the school gym between 3:00pm - 4:15pm. The forthcoming shop dates are below:

- Thursday 20<sup>th</sup> August 2020 (Appointment only)
- Thursday 3<sup>rd</sup> September 2020
- Thursday 1<sup>st</sup> October 2020
- Thursday 5<sup>th</sup> November 2020
- Thursday 3<sup>rd</sup> December 2020
- Thursday 7<sup>th</sup> January 2020
- Thursday 4<sup>th</sup> February 2020
- Thursday 4<sup>th</sup> March 2020
- Thursday 1<sup>st</sup> April 2020
- Thursday 6<sup>th</sup> May 2020
- Thursday 10<sup>th</sup> June 2020
- Thursday 1<sup>st</sup> July 2020

You can also order online for home delivery, please visit: <https://www.schoolsinuniform.co.uk/>



Farmhouse Road, Derby, DE24 3AR

**Contact Number:** 01332 270450

**Email:** [admin@cityofderbyacademy.org](mailto:admin@cityofderbyacademy.org)

**Web:** [www.cityofderbyacademy.org](http://www.cityofderbyacademy.org)



@CityOfDerbyAcademy



@CoDA\_Sinfin